



ITS America Update

Scott F. Belcher
President and CEO
Intelligent Transportation Society of America

- Transportation Challenges in the U.S.
- ITS Opportunities in the U.S.
 - National Surface Transportation Policy and Revenue Study Commission Report
 - SAFETEA-LU Reauthorization
 - Climate Change
- Update on ITS America
- Discussion topics



TRANSPORTATION CHALLENGES IN THE U.S.

Political Challenges

- Republican Administration, Democratic Congress
- Lame duck Administration
- Presidential (and Congressional) elections
- Congressional earmark process
- Inadequate transportation funding
- Mixed reception to pricing solutions and ITS

Transportation Challenges

Safety: 42,000 people die in the U.S. each year in traffic crashes, 2.7 million people injured

Chart 1: Fatalities and Fatality Rate per 100M VMT by Year

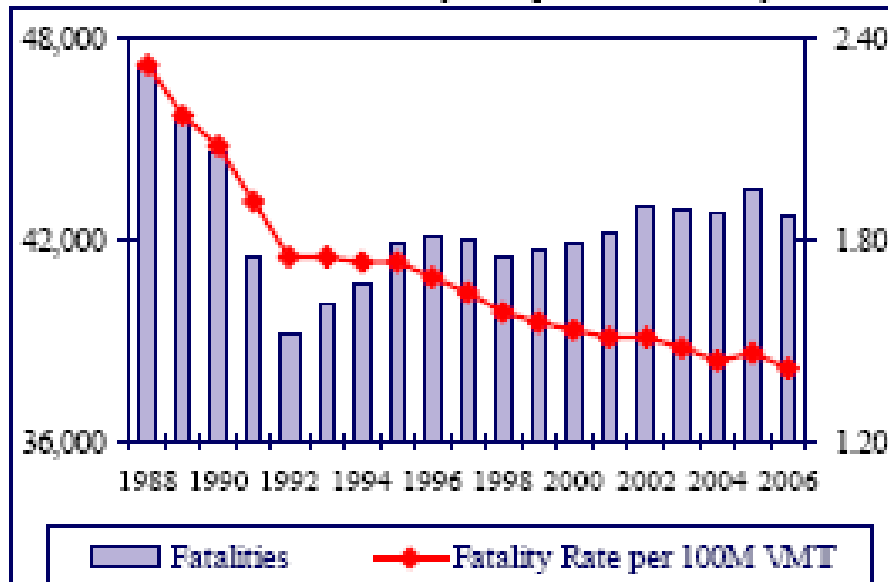
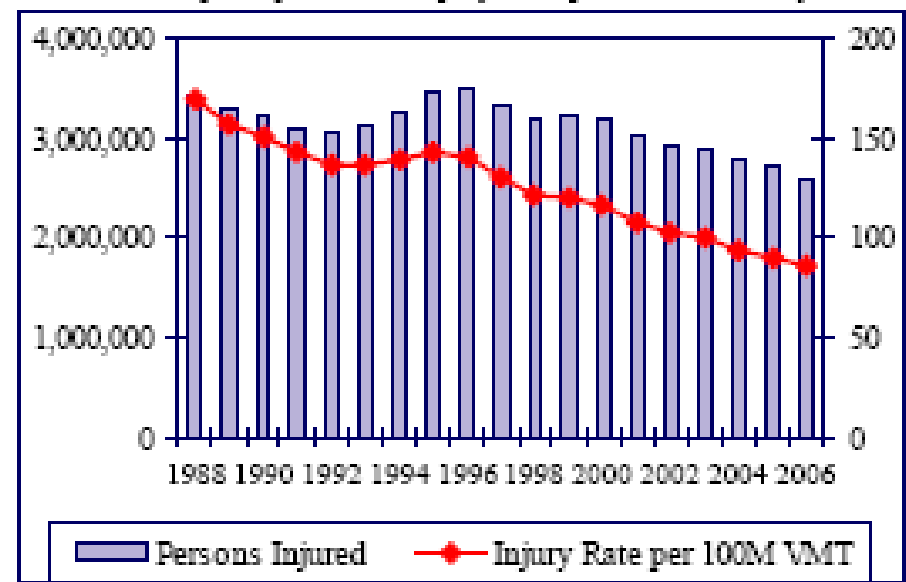


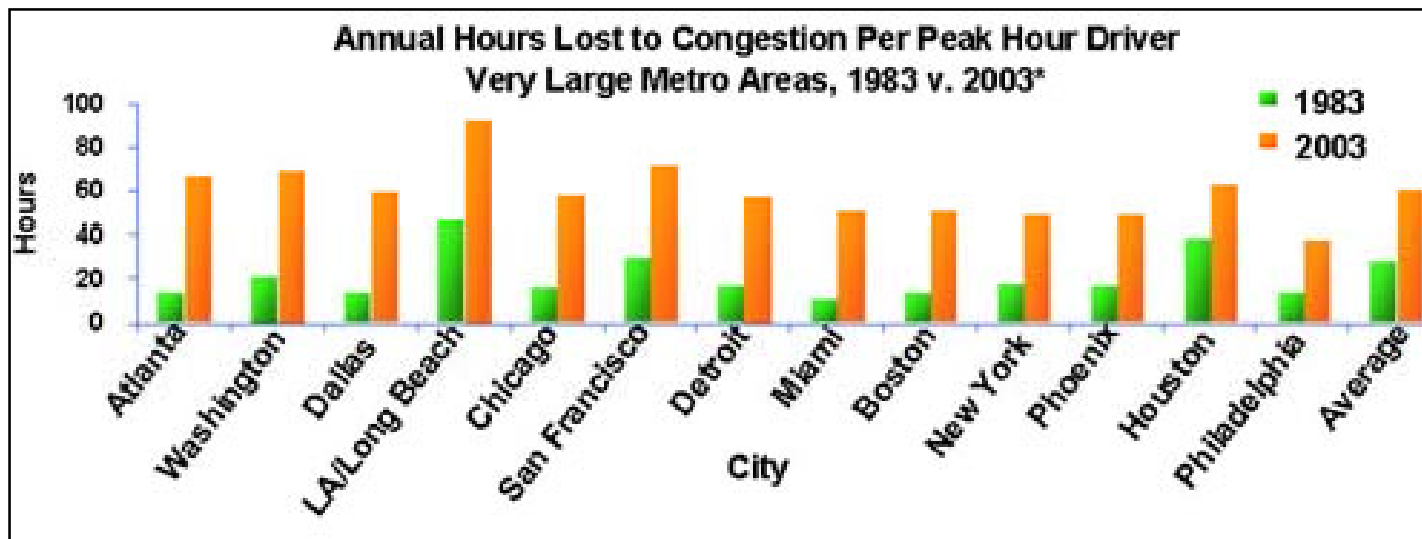
Chart 2: People Injured and Injury Rate per 100M VMT by Year



Transportation Challenges (cont'd)

Mobility: congestion based on traffic delays, wasted time and fuel cost U.S. taxpayers approximately \$78 billion a year:

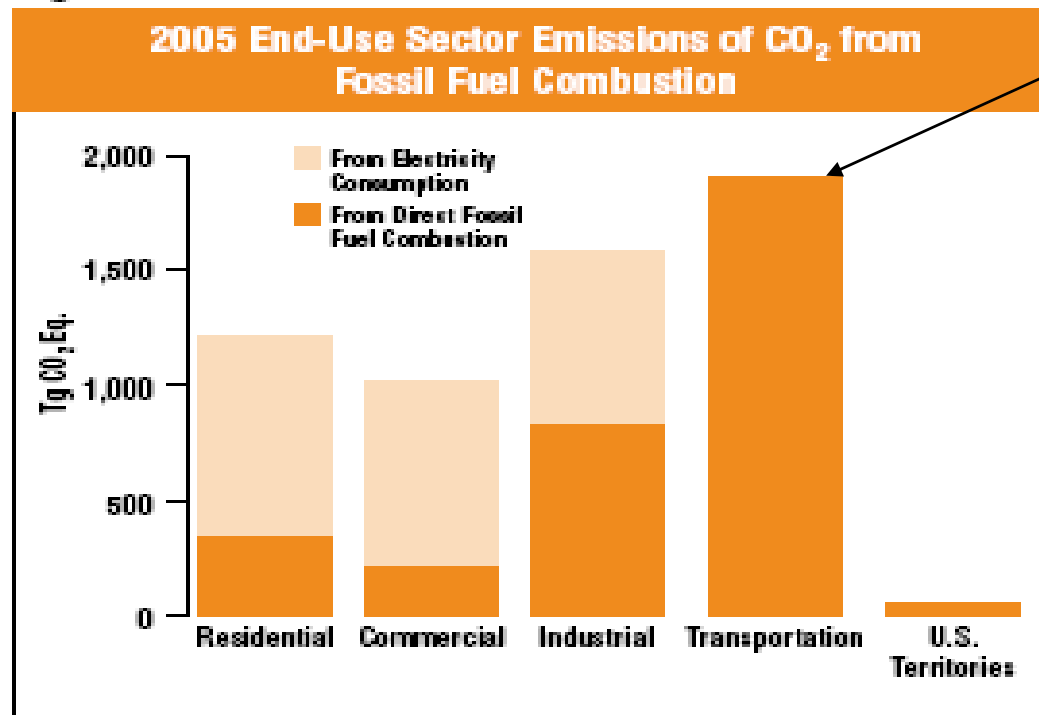
- Over the past 20 years, the number of hours lost each year by an average driver to congestion increased from 17 to almost 50.
- In the 13 largest cities, drivers now spend the equivalent of almost 8 work days each year stuck in traffic.
- 2.9 billion gallons of wasted fuel—equivalent to 58 fully-loaded supertankers.



Transportation Challenges (cont'd)

Environment: transportation accounts for roughly 28% of U.S. greenhouse gas emissions

Figure ES-7



Transportation

Source: EPA, Inventory of U.S. Greenhouse Gas Emissions and Sinks, 1990-2005.



ITS OPPORTUNITIES IN THE U.S.

National Surface Transportation Policy and Revenue Commission's Report

“Transportation for Tomorrow”

- Commission authorized by SAFETEA-LU
- Twenty-month study period via public hearings and technical analysis
- Report and recommendations issued on January 15, 2008 –
“Transportation for Tomorrow”
- Commission Chair and U.S. DOT Secretary Mary Peters dissented from the report along with Commissioners Cino and Geddes
- Report sets the stage for a new dialogue

Five Key Recommendations: “Transportation for Tomorrow”

1. Significantly increasing investment in surface transportation, including investing at least \$225 billion annually
2. Accelerating the time between conception and delivery of major transportation projects to reduce costs while still addressing environmental concerns
3. Retaining a strong Federal role in transportation, while depoliticizing investment decisions (i.e., performance driven programs supported by cost/benefit evaluations rather than political “earmarking”)

Five Key Recommendations (cont'd)

4. Replacing over 100 current transportation programs with 10 programs focused on the national interest
5. Creating a new National Surface Transportation Commission to perform two principal planning and financial functions—overseer of a stakeholder-rich planning process whose goal would be to develop national strategic plans for each of the program areas and establish the cost to finance the plan

Implications for ITS

- All ITS deployment is local
- Transportation technology = ITS
- Performance measurement
- Simplifying the array of transportation programs
- Importance of Public-Private Partnerships
- Lack of consensus by the Commission presents Opportunities, not problems

SAFETEA-LU Reauthorization

Reauthorization . . . “Last of the old or the first of the new”

- Financing
- Federal role
- States’ role
- ITS research
- Public-private partnerships

Climate Change and Transportation

ITS-related transportation control measures can reduce emissions:

- Restricted and managed-access HOV roads/lanes
- Traffic flow improvement technologies (signal control, traveler information systems, transit and incident management systems)
- Electronic weigh stations, toll/fare payment
- HOT lanes, variable toll lanes, cordon pricing
- Engine-idling reduction technologies/measures
- Freight/intermodal programs

UPDATE ON ITS AMERICA

Intelligent Transportation Society of America

- **Intelligent Transportation Society of America (ITS America):**
 - Headquartered in Washington, DC with 23 regional and state chapters covering 34 states
 - Washington, DC office with 23 full time staff and a variety of consultant support
- **Membership approximately 50% private sector businesses and 50% public sector/non-profit organizations**
 - National and international companies
 - Federal, state, and local government agencies
 - Universities, independent research organizations, public interest groups

ITS America's New Vision and Mission

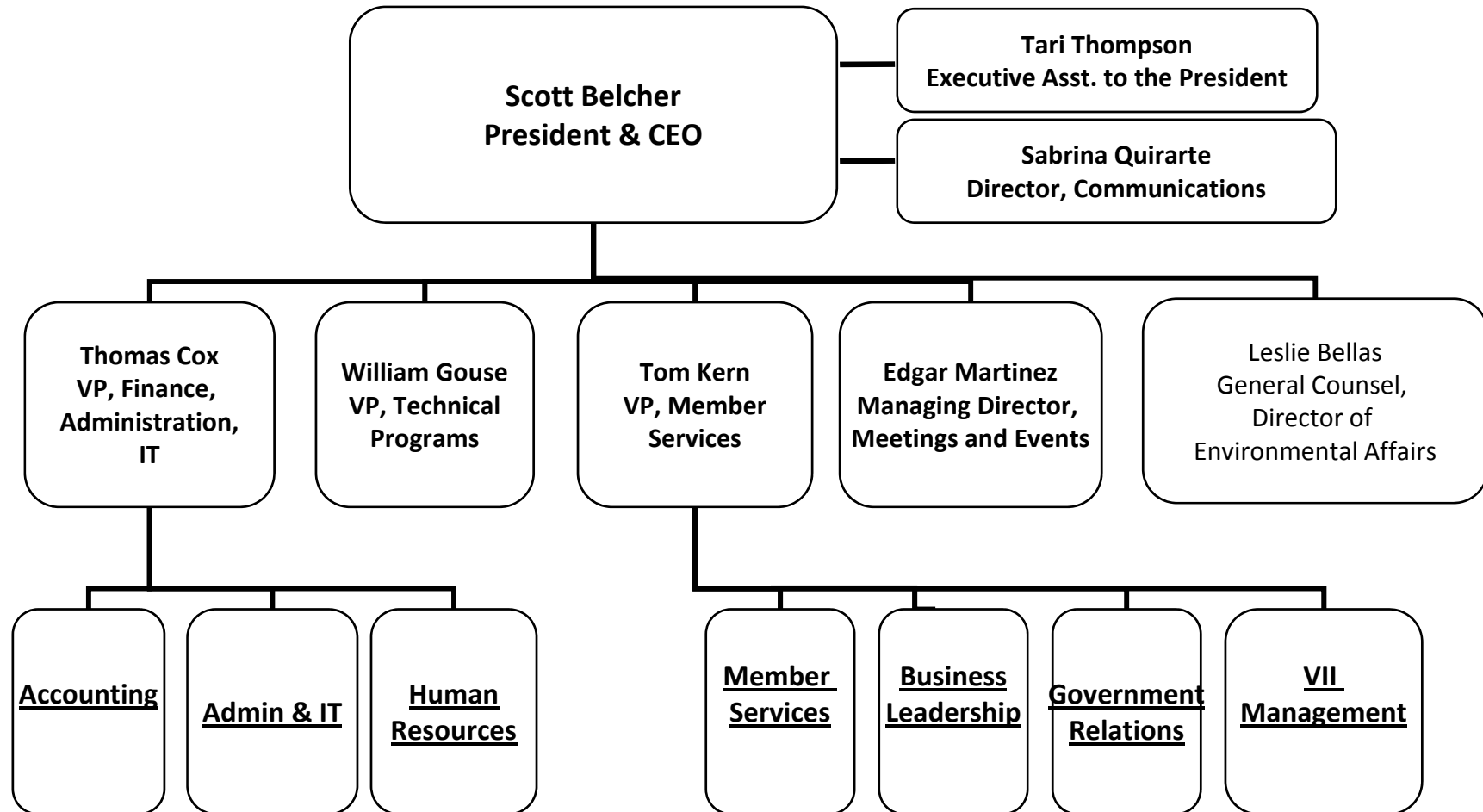
Vision

Help save, lives, time and money and sustain the environment through broad development of interoperable ITS technologies.

Mission

To be proactive leaders for all ITS stakeholders promoting collaboration and networking in research, development and design of ITS technologies to accelerate their deployment and sustain the environment.

New Organizational Structure



ITS America Priorities for 2008

- 2008 World Congress
- Relationship with the U.S. Department of Transportation
- Member services

ITS America Membership Focus Areas

- Enhance State Chapters
- Increase support for VII
- Upgrade Government Affairs capacity
- Upgrade Membership capacity
- Establish Environmental capacity
- Establish non-dues revenue center

POTENTIAL DISCUSSION TOPICS

- World Congress '08
- World Congress '09
 - Reception at the Swedish Embassy
- Sustainability
- Data sharing
- State Chapter relationships
- Privacy
- Social equity

Thank You

Scott F. Belcher

President and CEO

Intelligent Transportation Society of America

sbelcher@itsa.org

800-374-8472 ext. 4210